

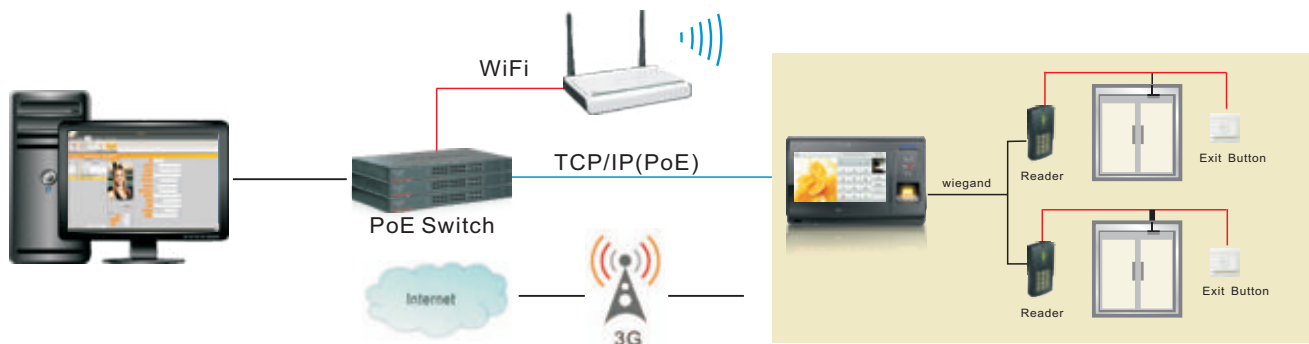
uTouch Access **BoneID**

Access Control & T/A Solution



BoneID Embedded is intelligent access control time attendance software solution worked on uTouch Access. 7" Touch screen with intuitive menu make a perfect user experience for convenient and easy operation. With integrated user management, it supports NFC, Contactless card and Biometric security to meet various combination of security level and each transaction with user picture to avoid unauthorized access for security and flexible use.

BoneID Net with optional Express module for basic Time Attendance is powerful PC software access control solution for single or network management of uTouch Access.



BoneID Embedded | GUI Software



- 1 Menu** Setting menu
- 2 Data & Time** in real time
- 3 Get Picture** Show picture taken by camera
- 4 Job Code** Show types of work absence
- 5 Picture** Custom background picture or LOGO
- 6 PIN Code** Entry security code

Advantages

- Standalone/Network or server management Solution for unlimited number of users
- Easily manage hundreds of transactions directly on the device no need of any PC software
- Support various types of access levels to enhance security
- Supports multiple cards and up to 10 fingerprint templates assigned for each user
- 4 Customizable job code for In/Out manage
- Each event record stores actual user picture to prevent misuse of card
- Flexible data transmission via TCP/IP port, or Wi-Fi, GPRS for wireless communication
- Customizable Skin and LOGO and easy setting for all parameters by one touch
- Multi-language software supports most common world languages and is simply to translate into any language

► Main Functions



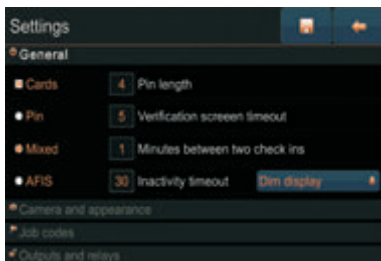
Set the Unit

- **Users** Administrator create, delete, enroll, add and remove cards for the users of the unit
- **Settings** Set up various parameters, including general parameters, display, visual and input/output parameters and synchronization Date & time
- **Transactions reporter**
- **Network** Set up communication parameters
- **Tools** Various system tools



Users Management

- Comprehensive archive & management of user with pictures
- Supports multi- fingerprint & cards enrollment for one user
- Supports various Access level & Level type settings for users

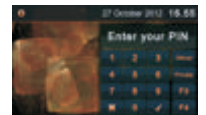


Settings

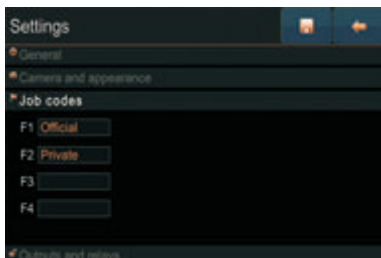
- Set various types of security access levels
- Set date & time to different time zone to work in real time
- Custom Job Codes for access management
- Customizable Skin and background picture of system with LOGO



Light Skin



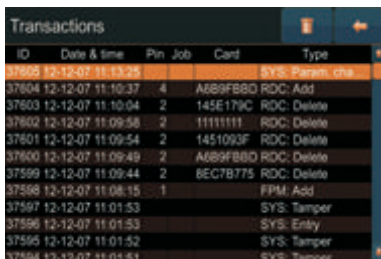
Dark Skin



Job codes

Shows types of work absence which last only for a part of the day. Types:

- Private Leave
- Official Leave
- Lunch Break
- Visit to the doctor, etc.



Transactions

- Easily manage hundreds transactions directly on the device
- Quickly check events just on the device no need of any PC software
- Compare user pictures and actual transaction for preventing misusing cards



Network

Flexible communication with network via Ethernet, Mobile connectivity, even Remote access
Connect to a network over Internet by using VPN connection over PPTP protocol, or simply use one of well known DDNS services and connect unit to your network

BoneID Net with Express | PC software



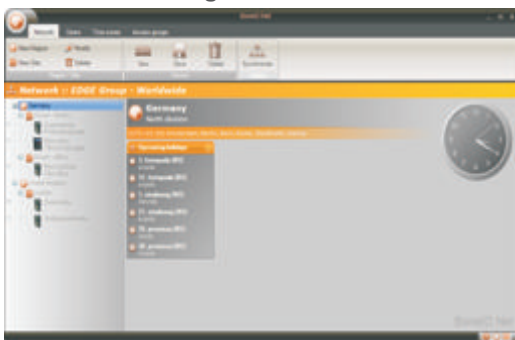
BoneID Net is PC intelligent Access Control software based on RFID & biometric authentication to control network of Civintec devices. It's easy operation suitable for small-to-large sized organizations. **BoneID Express** is time attendance software module integrated into BoneID Net. It can be simply used by one-click solution to literally get complete monthly T&A report for all users.

► Advantages

- Supports Multi- languages and easy to translate to user language
- Flexible and extendible IP based system & easy integration with third-party software
- Capable of managing most complex environments due to regions and sites grouping
- Fast speed to complete full T&A functionalities like custom reports, worked hours, late arrivals, etc
- Automated reports can be sent to e-mails and data can be exported to other complex T&A or payroll systems

► Main Functions

• Network Management



Multiple regions, sites and devices management for systems to realize centralization of access control

• Shift Management



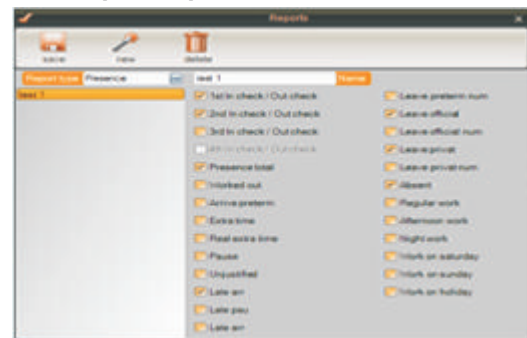
Multiple definable shifts for fixed working time, Sliding shift or shift without defined start or end time.

• User Management



Comprehensive archive & management of employee's data with unlimited user numbers

• Multiple Reports



Custom report types to create various reports with specific data of interest. Definable Periodical, Summary, Presence reports

► BoneID Net & BoneID Express Working Environment

- Windows XP Professional, Windows Server 2003, Windows Vista, Windows Server 2008, Windows 7, Windows Server 2012 or Windows 8
- MS SQL Server 2008 Express, Workgroup, Standard, Enterprise or Developer
- .NET Framework 4.0
- Minimum processor 1GHz
- Recommended minimum memory 512 MB
- Minimum screen resolution 1280 × 768



BoneID is the partner APP software, sorted and specialized for access control, time attendance and visitor management, from the European company EDGE Group under CIVINTEC's uTouch Partner Program.

[Learn more about uTouch Partner Program...](#)