



# Intelligent 3D Stereo Vision

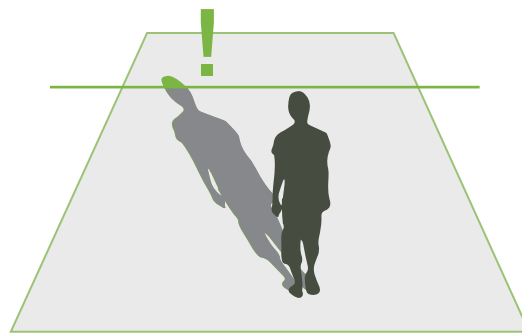
For Security & Surveillance

# huperEyes 3D Series

## huperLab 3D

### Stereo Vision Technology

huperLab proprietary 3D stereo vision technology, combining huperLab's advanced 3D video algorithms and huperEyes dual-lens stereo cameras, achieves the high matched ability of human visual perception. The advantages of the 3D stereo vision technology list as follows.

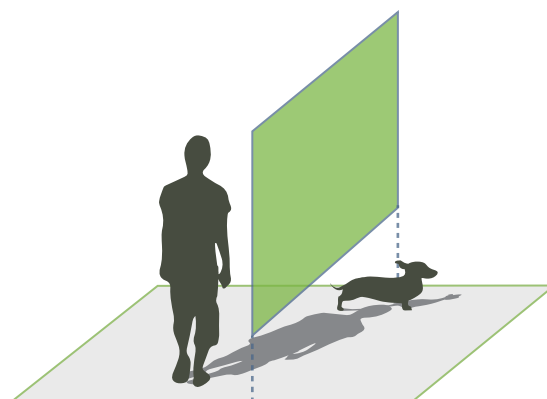


**2D Fence Line**

A person's shadow will cause a false alarm.

### 98%+ High Accuracy

With the generated precise depth and height information, the 3D stereo vision technology performs far more accurate than conventional 2D vision technologies.



**3D Fence with Height Filter**

Specify the fence height filter to focus on specific targets only.

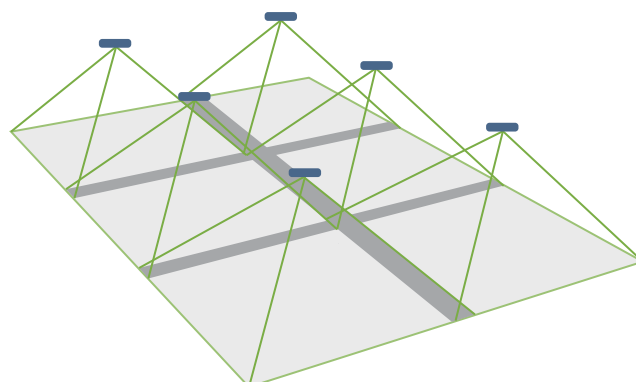
### High Tolerance to Critical Weather Conditions, such as Rain, Snow, and Wind

Reduce false alarm in dynamic environments from sudden light and shadow changes, car headlights, and fallen leaves.



### Easy to Cascade 3D Stereo Cameras for Large Area Detection

- The advanced cascading algorithm to stitch effective detection zones
- Counting in certain scenarios



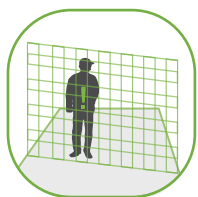
# 3D Video Analytics for Security & Surveillance

Working with huperAnalyzer video analytics management system, a wide selection of innovative 3D video analytics are ready to enrich your retail management to another level.



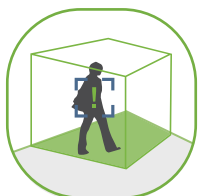
## 3D Tailgating Detection

- Integration with access control via digital inputs
- Real-time tracking tailgaters & trespassers
- Intrusion detection through invisible 3D virtual door



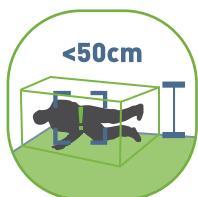
## 3D Virtual Fence

- Bi-direction virtual fence detection
- Selectable height range for filtering out
- Support touching fence & crossing fence mode



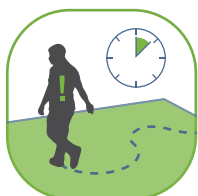
## 3D Secure Zone

- Polygonal detection zone to fit different environments and demands
- Selectable minimum loitering time in zone to alarm



## 3D Fall / Stop Detection

- Selectable body sizes for filtering out
- Designating the fall-down/pause time to alarm
- Specifying the fall-down body ratio to alarm



## 3D Loitering Detection

- Raise an alert if suspicious people are loitering long in a monitoring area
- Real-time display loitering paths in different colors
- Adjustable minimum loitering time



## 3D Air-lock Room

- Flexible for small and large rooms
- Able to detect the tailgating situation
- Digital I / O connect to access control, alarm devices and/or door controllers



## 3D Two-Factor Authentication

- Two authentications at different places to increase the security level
- Optional U-turn handling

### Retail 3D video analytics

3D People Counter, 3D Area Counter, Capacity Management, 3D Queue Length Management\*

### Transportation 3D video analytics

3D Vehicle Counter, 3D Bus People Counter, 3D Mobile Detection

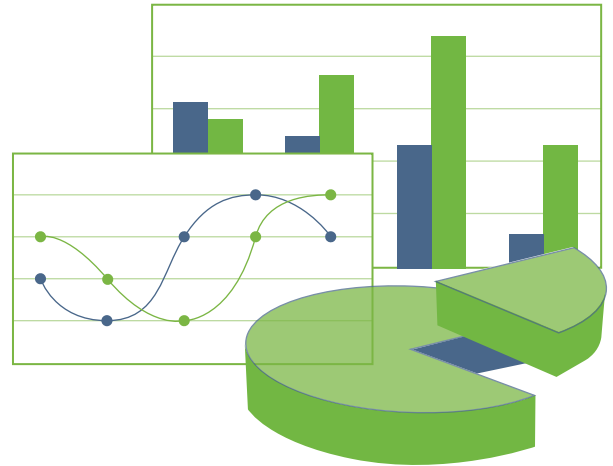
### 2D video analytics

People Counter/People Counter Pro, Flame Detection/Flame Detection Pro, Virtual Fence Detection, Motion Detection (with object size filtering), Missing & Left Object Detection, Secure Zone Detection, Scene Change Detection, Flow Counting, Loitering Detection, Smoke Detection, Occupancy Counter, Access Counter, Car Plate Detection, Car Plate Recognition, Video Stabilization

# Management System & Integration

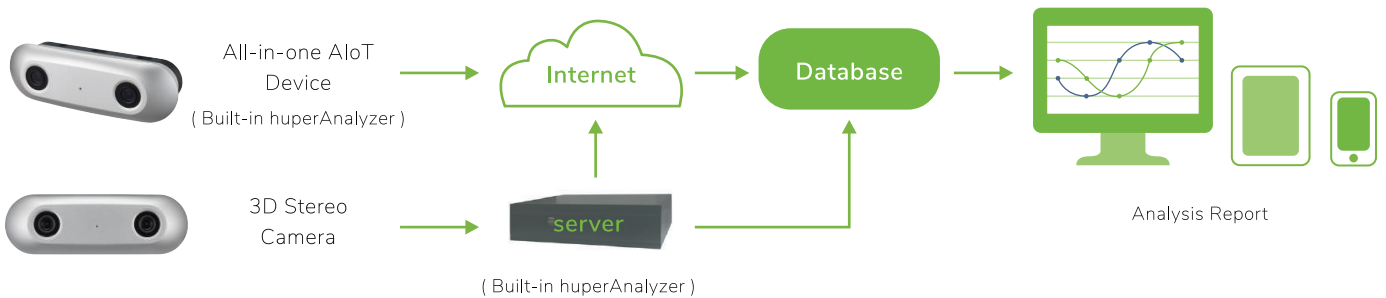
## Key Features

- Central management of event notification, event management and event record searching
- Push information and notification to smart phones
- Two-way voice communication to handle events promptly
- Digital inputs / outputs for integrating with device equipments
- SDK available for system integration



## 3D Camera Series

### Feature



### All-in-one AIoT Device

HE-S800 | HE-S804 ( normal-medium detection area )



### 3D Stereo Camera

HE-A504 | HE-A505 ( normal-medium detection area )  
HE-D716 | HE-D720 ( wide detection area )

