

*your*  
WORKSPACE

*Sit Stand*



## Ultimate Flexibility for the Agile Workspace

Your Workspace are matter experts in agile and hybrid working practises and transforming traditional offices into innovative environments. We understand the need for diversity in the workplace; our Sit-Stand desk range reflects this and offers ultimate flexibility for any modern working environment.

## Contents

06

Benefits of sit stand desks

08

Forte

10

Forte 3 leg

12

Duet

14

Uno

16

Quatro

18

Finishes

20

Accessories

22

Hand Controls

24

Bespoke

## Benefits of Sit-Stand

The height adjustable Sit-Stand range allows desks to be easily and quickly adjusted to suit every individual need. Switching between a sitting and standing position while working is believed to have a whole host of benefits:



### Improves well-being

Standing increases blood flow and circulation, which improves your mood and reduces stress levels.



### Enhances energy levels

Standing increases oxygen levels in the body and brain, which can help fight mental fatigue.



### Increases productivity

It has been proven that standing at work improves concentration and alertness, meaning employees will be more productive at work.



### Promotes overall health

You can burn more calories, lower blood sugar levels, and improve overall heart health when standing 3 hours a day or more.



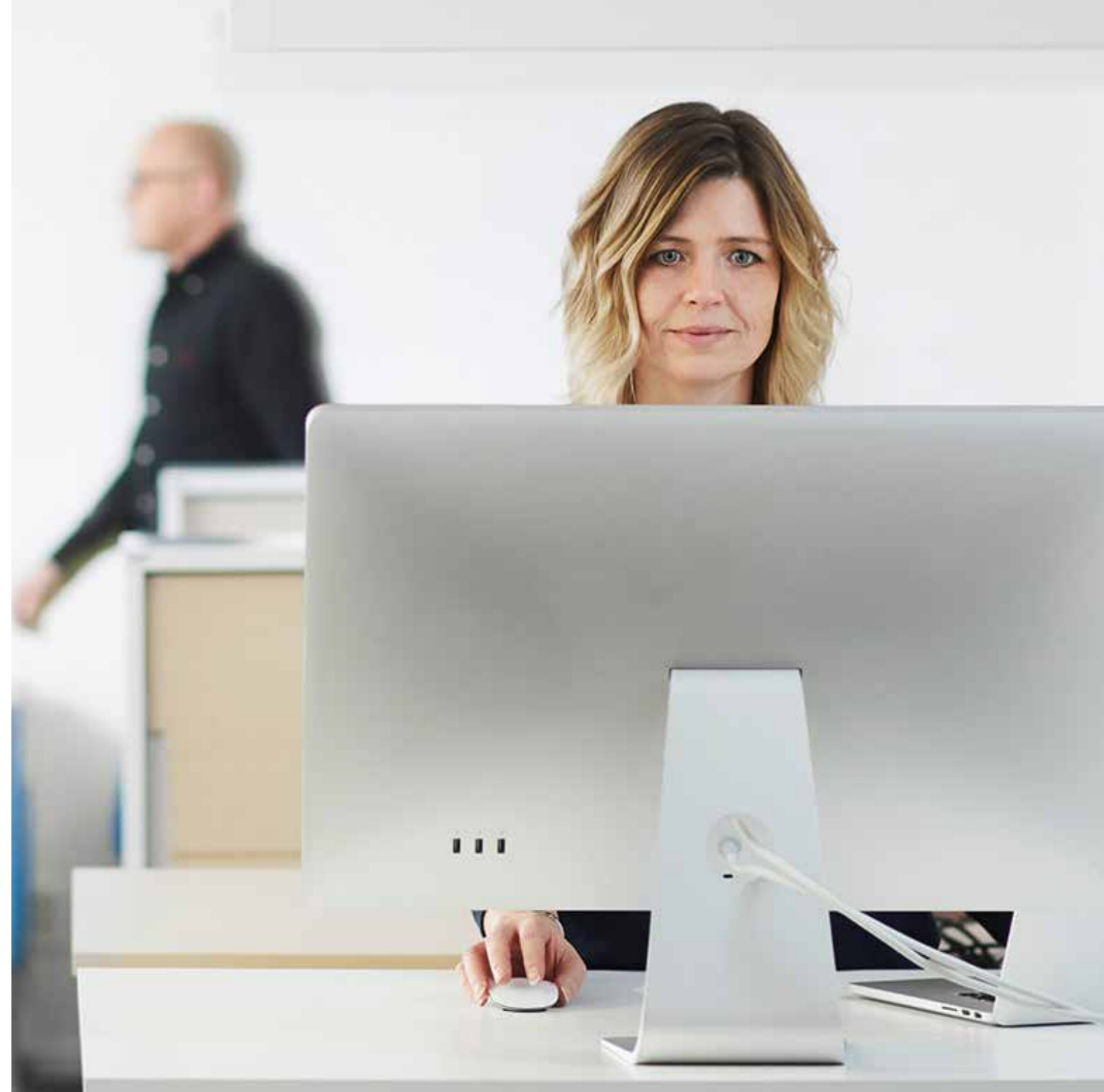
### Encourages good posture

According to health experts, standing can reduce neck, back, shoulder and leg pain by 54%.



### Inspires collaboration

Inspire more collaborative ways of working with a Sit Stand desk. Standing removes boundaries, which in turn encourages communication and teamwork.





## Forte

Our Forte Sit Stand frame makes it easy for the modern employee to adjust their work environment to suit their needs. The electronic height adjustable frame and non-restrictive base allows the user to create a dynamic workspace which utilises the latest technology.

\*Other desk sizes available upon request\*

### Product Details



White  
RAL 9016



Silver  
RAL 9006



Black  
RAL 9005



Anthracite

### Adjustable Height

Yes

### Powered by

Electricity

### Height Range

(allowing for 25mm top)  
640mm - 1300mm

### Table Top dimensions

1200 x 700  
1400 x 700  
1600 x 700  
1800 x 700

### Anti colision

Yes

### Lifetime

Min 10 000 cycles

1200 x 800  
1400 x 800  
1600 x 800  
1800 x 800

### Guarantee

5

### Lift Capacity

Maximum spread load - 100kg

### Noise Level

< 42 dBa



## Forte 3 Leg

Our Forte 3 Leg Sit Stand range combines increased desk space with ultimate flexibility. The robust and ergonomic design, that uses the latest in height adjustment technology, can easily be adjusted to provide the optimum space to work in.

\*Other desk sizes available upon request\*

### Product Details



White  
RAL 9016



Silver  
RAL 9006



Black  
RAL 9005



Anthracite

### Adjustable Height

Yes

### Powered by

Electricity

### Height Range

(allowing for 25mm top)  
640mm - 1300mm

### Table Top dimensions

Main Desk    Return  
1600 x 800 - 1000 x 600  
1800 x 800 - 1000 x 600

### Anti colision

Yes

### Lift Capacity

maximum spread load - 150kg

### Lifetime

Min 10 000 cycles

### Noise Level

< 42 dBa

### Guarantee

5



## Duet

Our Duet provides users with an agile working station with added flexibility. The stable design and multi-use height adjustment control system makes a great addition to any modern and hybrid style office.

\*Other desk sizes available upon request\*

### Product Details



White  
RAL 9016



Silver  
RAL 9006



Black  
RAL 9005



Anthracite

### Adjustable Height

Yes

### Height Range

(allowing for 25mm top)  
615mm - 1275mm

### Anti colision

Yes

### Lifetime

Min 10 000 cycles

### Guarantee

5

### Noise Level

< 42 dBa

### Powered by

Electricity

### Table Top dimensions

1200 x 675  
1400 x 675  
1600 x 675  
1800 x 675

1200 x 775  
1400 x 775  
1600 x 775  
1800 x 775

Example  
1200mm  
x 775mm,  
giving an  
overall depth  
of 1600mm -  
this allows for  
the dividing  
screen

### Lift Capacity

maximum spread load per top  
- 100kg



## Uno

The Uno is our entry level frame and comes integrated with the Uno M. The free-standing legs promote freedom of movement, and the individual workstation allows each user to create a bespoke workspace that suits their working style and individual needs.

\*Other desk sizes available upon request\*

### Product Details



White  
RAL 9016



Silver  
RAL 9006



Black  
RAL 9005

### Adjustable Height

Yes

### Height Range

(allowing for 25mm top)  
715mm - 1195mm

### Anti colision

Yes

### Lifetime

Min 10 000 cycles

### Guarantee

1

### Powered by

Electricity

### Table Top dimensions

1200 x 700  
1400 x 700  
1600 x 700

### 1200 x 800

1400 x 800  
1600 x 800

### Lift Capacity

maximum spread load - 100kg

### Noise Level

< 42 dBa





## Quatro

Quatro is the ultimate height adjustable conference table that offers total versatility in a collaborative space. We can create your Quatro Sit Stand conference table in a range of dimensions. The elegant legs and a contemporary design combined with the latest technology will take your meeting facilities to the next level.

\*Other desk sizes available upon request\*

### Product Details



White  
RAL 9016



Black  
RAL 9005

#### Adjustable Height

Yes

#### Powered by

Electricity

#### Height Range

(allowing for 25mm top)  
705mm - 1225mm

#### Table Top dimensions

2100 x 1100  
2800 x 1100  
3500 x 1100

#### Anti colision

Yes

#### Lifetime

Min 10 000 cycles

#### Lift Capacity

maximum spread load - 100kg

#### Guarantee

5

#### Noise Level

< 42 dBa

## Finishes

Offices and workspaces are all about the people in them, which is why it is important to create the right environment, look and feel.

We have combined our best-sellers with the latest trends to create a unique palette of finishes we know will appeal to our clients. Our Sit Stand desks can be manufactured using a range of standard finishes to seamlessly integrate into your workspace and match your existing or new décor requirements. Or, if you have a vision to create a workspace that incorporates a unique colour scheme, we will be happy to help you bring your vision to life.

We are also able to manufacturer our range of Sit Stand desks using a range of finishes that have antibacterial surface properties – please speak to our team to find out more!



White K101



Light Grey U112



Anthracite U164



Portofino Cherry D2236



Maple D375



Stone Oak D2217



Beech D381



Opera Walnut D481

other finishes available on request



## Accessories For Frames

More than just a desk, our Sit Stand range also comes with a choice of optional features and accessories to give you greater control over how and where you work. For example, cable holders, screen brackets and power connectors are just some of the accessories we can offer with our Sit Stand desks.

A selection of accessories are available in other colours. Ask us for more information



Forte Cable Management

Flexibel cable chain for your Classic frame. Length 1320 mm



Duet Cable Management

Keep track of your power and data cables by collecting them in one place with a Cable Chain. Length 940mm



Quatro Cable Tray

Hide the cables nice and tidy with a cable tray. Length 550 mm or 825mm wide, depth 380 mm, height 135 mm



Cable Tray Flex

You can easily tilt the tray when you need to access the wires. Can be installed on the Forte, Duet & Uno ranges



Duet Bottom and Upper Cable Tray

Hide the cables nice and tidy with a cable tray and create a fully equipped and functional Twin workplace. Available in one Upper cable tray that fits under the table top or a Bottom cable tray to be mount between the side bars



Laptop Tray

Extractable tray in white sheet metal. For mounting underneath the table top



Scalloped Table

Incorporate a scalloped cut out top for discreet cable access



Cable Outlets

An ideal solution to keep wires and leads tidy at any workstation



Duet Screen Holder

Use the Duet Screen holder for mounting a fixed height desk screen between your workstations



Duet Transporter

Create a unit of multiple Duet workplaces using a transporter. To be attached to the lower cable tray on a Duet frame. Connects two workplaces together and creates a unified unit

## You're in control

Our discreet and easy to use hand controllers allow you to adjust the height of your workspace accordingly. For example, choose from controllers with touch functions or others that memorise your height settings; whatever your requirement we have a range of different controllers to choose from:

### Motion T

This compact hand controller, with touch buttons for adjusting the height of your desk frame, is both modern and functional and mounts discretely under the desktop.



### Motion Ti

This hand controller is flush fitting to fit seamlessly into your desk. The larger buttons provide easy and effective control of the height-adjustable desk frame.



### Memory S

Another hand controller that integrates effortlessly in your desk is the Memory Ti. It is an elegant and modern design with unique touch function. The built-in display screen allows settings to be easily read, and the memory functionality permits the rapid retrieval of stored desk heights.





*Bespoke*

## When Standard Just Won't Do!

We understand that each workplace is different, as are the people that work within them. That is why we offer a complete bespoke Sit Stand design service that can be tailored to meet your workplace requirements and will provide your employees with revolutionary flexibility.

Our expert team of designers and manufacturers will ensure we get every aspect of your design right to your exact specification, down to the finest detail.

So, whether you would like to create a unique desk design, create an individual mobile workstation on wheels, or a larger conference style table for events and meetings; we can help bring flexibility to every aspect of your working environment to cater to all of your business and employee needs.

Contact us to speak with our dedicated team to discuss your bespoke requirements and to get a quote.



## Your Workspace

We are matter experts in helping businesses to transition to an agile way of working through our innovative range of office furniture and smart storage solutions. We are proud to be a British manufacturer, and our strong global partnerships mean we have access to some of the best materials on the market. With decades of experience in furniture design and manufacturing; we are dedicated to offering our clients a unique end-to-end solution which is bespoke to meet the ever-evolving needs of a business.

Ready to adapt your workspace?

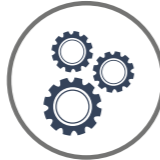
*We can help.*



concept



design



manufacture



delivery &  
installation

## Contact us

### Head Office

🏠 Mill Lane, Fullbridge  
Maldon, Essex  
CM9 4NX  
United Kingdom

☎ +44 (0)1621 855 053

✉ marketing@yourworkspace.com

🌐 www.yourworkspace.com

### Showroom

🏠 Ground Floor  
11-12 Great Sutton Street  
Clerkenwell  
London  
EC1V0BX  
United Kingdom



*your*  
WORKSPACE